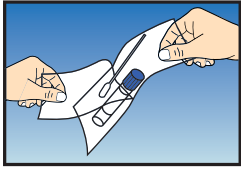
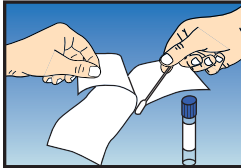


Swab Collection and DNA Preservation System

Donor Procedure

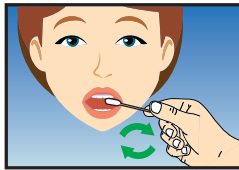


- 1 Peel open the wrapper from the side marked with the arrow. Remove the swab and the vial from the wrapper. **Do not touch the swab tip.**



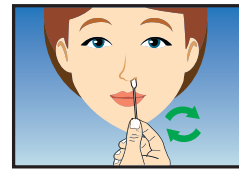
- 2 Collect the specimen from the patient. Examples of different sample collection methods can be seen below (A to D).

A Buccal/Cheek



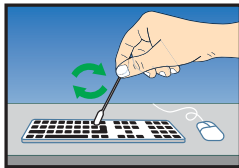
Place the Collection Swab in cheek pouch, rotate and move the swab head for 30 seconds to collect as many buccal cells as possible.

B Nasal



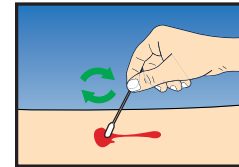
Place the Collection Swab in a nostril, rotate and move the swab head for 30 seconds to collect as much nasal cells as possible. Collect from both nostrils if necessary.

C Surface/Skin

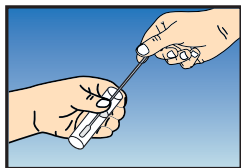


Place the Collection Swab on the surface/skin, rotate and move the swab head for 30 seconds to collect as much material as possible.

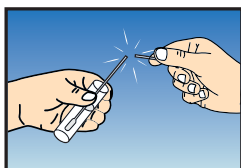
D Blood/Stool/Fecal



Place the Collection Swab on the area with the sample, rotate and move the swab head for 30 seconds to collect as much blood cells as possible.



- 3 Using the appropriate aseptic techniques, remove the vial cap and insert the swab into the vial.



- 4 Break the swab shaft at the score point.



- 5 Replace the vial cap, securing tightly. Record patient information in the space provided on the vial label. The specimen is now ready for transport or storage.